

WÜST

SuperGrip II[®]
BY HULTDIN



WÜST CHIPPERS

Highest quality in chipping construction ensures a long service life and utmost chip quality at low operating costs.

WÜST

The WÜST company was founded by Karl Wüst in 1977. During the first few years, the company mainly offered a repair service for construction equipment and agricultural machines. The growing demand for log wood transport solutions in the forest and transport sector pushed Karl Wüst to assemble cranes onto trucks. In no time, Wüst gained good reputation and increased their stock of new customers.

In the early nineties, they started repairing wood chippers. Karl Wüst was convinced that he could build such machinery much better. Finally, his pioneering spirit drove him to construct his first wood chippers. After a myriad of tests, Wüst offered the first marketable wood chippers.

Soon, the wood fuel market and thus the demand for wood chippers increased quickly, so that Wüst further developed and enlarged their chipper range continuously. Nowadays, the company has a wide range of chippers for various superstructure variants and fields of application. Today, WÜST stands for high-quality and rugged Swiss chipper quality.

In September 2019, WÜST started a cooperation with the German chipper manufacturer ALBACH Maschinenbau in the sectors of vehicle construction, sales and service.

This partnership combines the different experiences of both companies. Thus, our customers highly benefit from the further development of our machines.

From now on, WÜST AG is responsible for the sales, service and central spare parts supply of ALBACH machinery in the Switzerland whereas ALBACH Maschinenbau adds 3-axle truck superstructure chippers and towed wood chippers to their portfolio. ALBACH uses its sales channels for the sale, service and central spare parts supply of the complete range of WÜST machines outside the Switzerland.

Together with our long-term committed staff from 10 different professions we endeavour to offer our customers excellent works and optimal solutions for wood chippers, wood transport vehicles and special superstructures.



SMC-812 CHIPPING UNIT

The SMC-812 chipper unit represents greatest chipping performance, paired with a high range of uses and a compact structure. Whether you are chipping coarse trunk wood or bulky branches and treetop material, even hardwood of up to 80 cm, for the SMC-812 chipper it is no problem.

Thanks to the cutting length adjustment possibilities and a large two-part screen, you can produce neatly calibrated chippings in the desired quality at any time. The low-maintenance structure ensures that the cutters and screen base can be replaced quickly.

SMC-812 CHIPPERTRUCK



Wüst SMC-812 TCR on a Volvo FMX 540 hp

TECHNICAL DATA

Infeed size	80 x 120 cm
Cutting length (adjustable):	15-45 mm
Knives / Blades	6 pcs. 200 mm
Rotor diameter	950 mm
Max. throughput	up to 300 m³/h
Max. power	540 hp (397 kW) at 1'450-1'800 rpm

VIDEO



Scan the QR code
or visit us
www.wuest-hacker.ch/smc
to see the product video.

OPTIONS

- 6x6 drive
- Various toolboxes
- Various sieve sizes and chip lengths
- Sieve crane with electrical winch
- Different cameras
- Wedge splitter or cone splitter
- Fourfold stabilisation
- Central lubrication system
- Park heating
- Additional lighting (8 spotlights)
- Inverter with socket next to maintenance platform (220 V)
- Wüst Trac-System
- Ejector with reverse flap

For all available options please contact the sales department

SMC-812 TCR, CHIPPERTRUCK WITH CAB GLAZING

WÜST relies on the Swedish car manufacturer Volvo for its truck chippers. The SMC-812 chippers are mounted onto a Volvo FMX (6x4 or 6x6) with 540 hp. The Volvo cabs have a spacious and clearly arranged workplace, which can be equipped with a sleeping accommodation if required. A large touch tablet with autodidactic menu guidance is available for control.



SMC-812 TCR

SMC-812 WITH CRANE CABIN

Instead of the glazed cab, the SMC-812 can also be equipped with an Epsilon-Q170L97 with a crane cab. This variant is available with both right and left-hand infeed.



Wüst SMC-812 CCL (crane cab, infeed on the left) accelerator at the back



Wüst SMC-812 CCL (crane cab, infeed on the left) accelerator at the back



Wüst SMC-812 CCR (crane cab, infeed on the right) accelerator in center



Wüst SMC-812 CCR (crane cab, infeed on the right) accelerator in center

SMC-812 PTO CHIPPER



Wüst SMC-812 PTO towed by a SYN TRAC (420-460 hp)



Wüst SMC-812 PTO towed by a SYN TRAC (420-460 hp)



Wüst SMC-812 PTO chipper



Wüst SMC-812 PTO chipper

TECHNICAL DATA

Infeed size	80 x 120 cm
Cutting length (adjustable):	15-45 mm
Knives / Blades	6 pcs. 200 mm
Rotor diameter	950 mm
Required power	> 250 hp
Max. throughput	up to 300 m ³ /h

OPTIONS

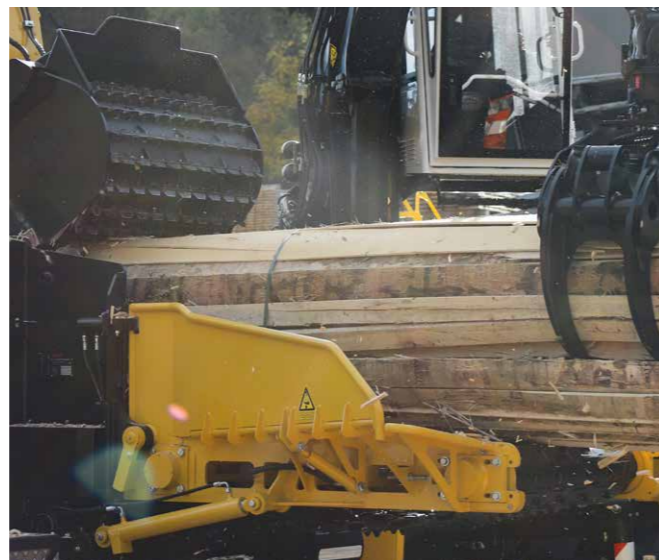
- industrial or field tyres
 - Various toolboxes
 - Various sieve sizes and chip lengths
 - Sieve crane with electrical winch
 - Different cameras
 - Additional lighting (4 spotlights)
 - Inverter with socket next to maintenance platform (220 V)
 - Wedge splitter or cone splitter
 - Fourfold stabilisation
 - Central lubrication system
 - Ejector with reverse flap
- For all available options please contact the sales department

INFEED

The infeed unit is equipped with a large upper roller with interchangeable blades, two lower rollers with aggressive teeth and a leakage system with separator.



Upper infeed roll with interchangeable blades



The infeed table is fitted with folding side walls to save space.

MAINTENANCE PLATFORM

The chipper is very low maintenance thanks to the hydraulic platform, all required maintenance connections, divided screens, cutters with external screw connections and the crane for replacing the screen.



Maintenance platform with hydraulic folding and toolbox



Rotor with a 200 mm cutter system, fitted with a depth limiter for variable cutting lengths of 15–45 mm.

CONTROL

The chippers are controlled via a CAN bus display control unit with touch-screen which can be controlled through additional digital signals (push-button joystick or pedal switch). The accuracy of the control unit ensures continuously well-structured chips at high throughput and optimal fuel consumption. The machine operator can continu-

ously adjust infeed speed and, for machines with hydraulic accelerators, also rotation speed.

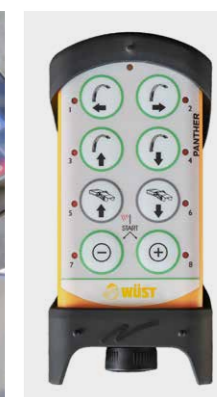
Using a hand-held transmitter, a second operator can even control the ejector pipe and self-dependently load the chips. Thus, the machine operator is supported and can put his focus on feeding the chipper.



Workplace



CAN-Bus-Display



Handheld transmitter

KNIFE AND BLADESYSTEM

The machines can be equipped with a knife or blade system.



Blade with adapter (quick-change system)



Knife (quick-change system)

OPTIONS

SIEVE HOLDER AND SIEVE CRANE

The sieve change is made considerably easier by a swivelling electric sieve crane. On the truck, it is mounted above the rotor. On the PTO, it is on the ejection tower.



Electrical sieve crane above the rotor

CENTRAL LUBRICATION SYSTEM

On request, the SMC-812 can be equipped with a central lubrication system with up to 24 lubrication points.



Central lubrication system with distributor

SPOTLIGHTS

For better visibility when working at night, the chippers can be equipped with additional LED work lights. (8 pcs. for the chipper truck, 4 pcs. for the PTO chipper).



LED worklights

FIELD TYRES

The SMC PTO chipper can be fitted with 560/60 R22.5 or 600/55 R22.5 tyres.



TOOLBOXES

To carry all the necessary material for the operation, additional toolboxes can be built up. In two different sizes at the rear right and in one standard size at the rear center.



Toolbox at the side



Toolbox at the rear right

ACCELERATOR

The hydraulic accelerator is continuously adjustable for optimal goods flow and develops a very high ejection performance so that chip silos can be easily filled while the machine is positioned forwards or backwards and with lowered spout front.



Volvo FMX, 540 PS with SMC-812 TCR, hydraulically driven accelerator, centrally arranged ejector spout

CARBIDE COUNTER BLADE

To guarantee a very high cutting quality at all times, a low-wear carbide counter blade can be installed.



Low-wear counter blade with soldered on carbide plates

REVERSING AND TOWER CAMERA

For a better overview when operating the chipper, as well as when loading the chipped material, a reversing and a tower camera can be optionally installed.



Tower camera

LOG SPLITTER

As an option a very powerful log splitter can be attached. With a split-height of 1150 mm and a pressure of 50 tons it enhances the machine considerably, because the location can be processed without any leftover wood.

Alternatively, it is also possible to mount a 3-engine Lasco cone splitter.

Wedge Splitter



Type:
Wüst

Splitting force:
50 t

Splitting height:
115 cm

Cone splitter



Type:
Lasco

3 engines

Cone diameter:
40 cm

Wood diameter up to:
150 cm

BBHK

BBHK-MODELS

The BBHK chipping units are available as towed PTO driven units or as directly driven truck superstructures.

The BBHK models convince thanks to their well calibrated chips with a low share of fine material. The powerful feeder of the chipping units allows for the chipping of bulky tree tops. Due to the rugged construction and solid spherical roller bearings of the chipper drum, even frozen hard wood can easily be processed.

TECHNICAL DATA

Infeed size

BBHK-100 55 x 100cm
BBHK-120 55 x 120cm

Cutter/blade system

BBHK-100 5 pcs. 200 mm
BBHK-120 6 pcs. 200 mm

Rotor diameter: 800 mm
Drive power: from 200 hp



Volvo FMX, 540 hp with BBHK-120



Volvo FMX, 540 hp with BBHK-120



BBHK-120 towed by a Fendt 1050 with reverse-drive system

VEHICLE

We are your competent partner when it comes to equipping your transport vehicle. Thanks to our long-term experience, we can offer you excellent advice and individual solutions for log superstructures, trailers for wood transport, crane superstructures in general and trailer construction. In 2019, Wüst took over the production, sales and service of ANDRES self-steering trailers. Thus, we can further enlarge our range in the sector of log trucks and offer complete solutions from one source.



Wüst KSLD-24

PRODUKTION UND SERVICE



REPAIR / SERVICE

Our highly trained team of mechanics repairs and revises various construction, agricultural and forestry machines. If necessary, our service vehicles can also accomplish on-the-spot repair work at short notice.

SPARE PARTS

Due to our extensive supply of spare parts and in-house production of special parts, we can ensure the supply of spare parts in no time.



HYDRAULICS BASE

For more than 25 years we have been running our own hydraulics base. We offer a stock of special-purpose and standard fittings. Thus we are in the position to satisfy almost any customer requests competently and promptly. Furthermore, we have a variety of standard cylinders, sealing kits and joint heads in stock so that we can produce new cylinders without any delays. Special cylinders and individual components for cylinders are produced at our in-house mechanical department.

MECHANICAL WORKSHOP

Our machine park for machining includes conventional and controlled machinery. We are equipped for the production of individual parts and small lots thus achieving a very high degree of in-house production.





WÜST

MASCHINEN- UND FAHRZEUGBAU AG

Holz matt 656
CH-3537 Eggiwil
Switzerland

www.wuest-hacker.ch
0041 (0) 34 491 17 12
info@wuest-hacker.ch
www.facebook.com/wuesthacker